



Load chart

Model
DC 1200Kg

CDD12-070

Max. 3.3m

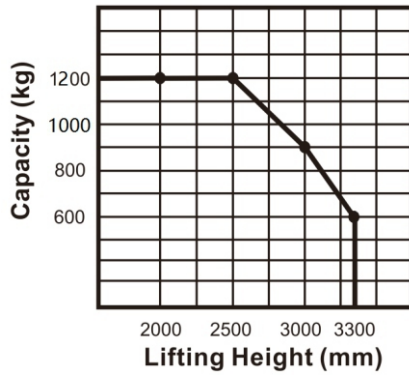
Advantages:

Configuration And Performance

- Separately excited motor, Strong climbing ability.
- High strength forks.
- Built-in charger is standard.
- Automatic lifting limit, Motor and battery life extension.

Safety

- Stepless speed control system, safe and quiet.
- Controller with Multiple automatic protection.
- Emergency reversing device/Emergency brake switch.



Built-in charger

Maintenance Free Battery

One piece heavy duty fork

Heavy duty H Mast



Feature		
Model		CDD12
Model No.		070
Type		Fork over
Mast type		2-Stage STD
Capacity	kg	1200
Load centre	mm	600
Wheel base	mm	1150
Operation type		Walkie
Wheels		
Wheel type		PU
Wheel quantity		1/1/4
Driving/Balance/Loading wheel		
Dimension		
Lifting height	mm	2000/2500/3000/3300
Mast extended height	mm	2515/3015/3515/3815
Mast lowered height	mm	1560/1810/2060/2210
Fork lowered height	mm	90
Fork size (length/thickness)	mm	1150 (1220) /185/55
Overall length	mm	1733
Overall width	mm	790
Fork outside width	mm	550/600/650/685
Fork inside width	mm	180/230/280/315
Min. turning radius	mm	1350
Min. aisle width for pallets 800*1200mm	mm	1914
Min. aisle width for pallets 1000*1200mm	mm	1955
Min. ground clearance	mm	30
Performance		
Travel speed,laden/unladen	km/h	3/3.5
Lift speed,laden/unladen	mm/s	120/180
Lowering speed,laden/unladen	mm/s	120/120
Gradeability,laden/unladen	%	5/7
Electrical configuration		
Drive motor / Lift motor /Steering motor	KW	DC0.63/DC2.0
Battery voltage	V	24
Battery capacity	Ah	85
Brake		Electromagnetic Regenerative
Controller		CURTIS
Weight		
Battery weight	kg	52
Self weight with battery	kg	600