

ERE18H

EXCAVATOR



ERE18H



ERE18H is CE approved small flexible crawler excavator with high-quality and high-value. Easy to operate with enough efficiency.



Perfect for a small project, garden, farmland and municipal works with multifunctional attachments.



Competitive prices that makes you scream!



Operation Weight - 1800KG



Engine Model - Laidong 18.4kW



Engine Options - Kubota Euro5/EPA4 engine



One button to start engine



Boom deflection



Expanding undercarriage



ERE
18H



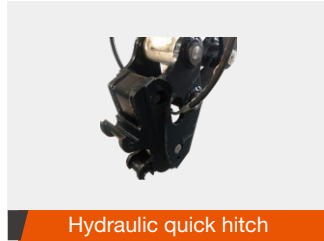
EXCAVATOR ERE18H



World Made Limited

Add. Unit: 304-7, 3/F Laford Centre, 838 Lai Chi Kok Road, Cheung Sha Wan, Kowloon, HongKong
Ph. (852) 2915.8198 E-mail: info@worldmadeltd.net www.worldmadeltd.net TIN: 72214994

Attachments:



Specifications:

Engine

Model	Laidong 3TE25 18.4kW/2200rpm
Type	Electronic injection, water cooled, natural intake
No. of cylinder	3

Main Performance

Swing Speed	r/min	10-12
Traveling Speed	km/H	2.8
Grade ability	%	70 (35°)
Traveling Tracking Force	kN	15
Bucket Digging Force	kN	11.5
Arm Digging Force	kN	9.3

Hydraulic System

Hydraulic system working pressure	Mpa	16
Hydraulic Pump	Gear Pump	AHWY
Hydraulic pump flow	L/min	22×2+8.8
Swing Motor		Eaton
Traveling Motor		Eaton
Fuel Tank Capacity	L	26
Hydraulic Tank Capacity	L	27

Overall Dimensions

Overall Length	mm	3800
Overall Width	mm	1050
Overall Height	mm	2280
Ground clearance	mm	485
Track length	mm	1630
Track width	mm	230
Undercarriage width	mm	1050
Undercarriage ground clearance	mm	235

Operation parameters

Operation Weight	KG	1800
Bucket Capacity	m ³	0.06
Max. Digging Radius	mm	3860
Max. Digging Depth	mm	2050
Max. Digging Height	mm	3370
Max. Dumping Height	mm	2390
Max. Dozer Cutting	mm	270
Max. Dozer Lifting	mm	235
Boom Deflexion (Left/Right)	°	75/45